

- Legend** map 1:40000
- tourist information
  - airfield
  - aquapark/pool
  - Jewish cemetery
  - state archive
  - cross-country skiing area
  - skiing area
  - view point
  - sport arena
  - war monument
  - bus parking
  - parking
  - train station



Jablonec nad Nisou

Simonovice

Pivarny

Praha  
↓  
Turnov

Jablonec nad Nisou

Správní území JESTĚD

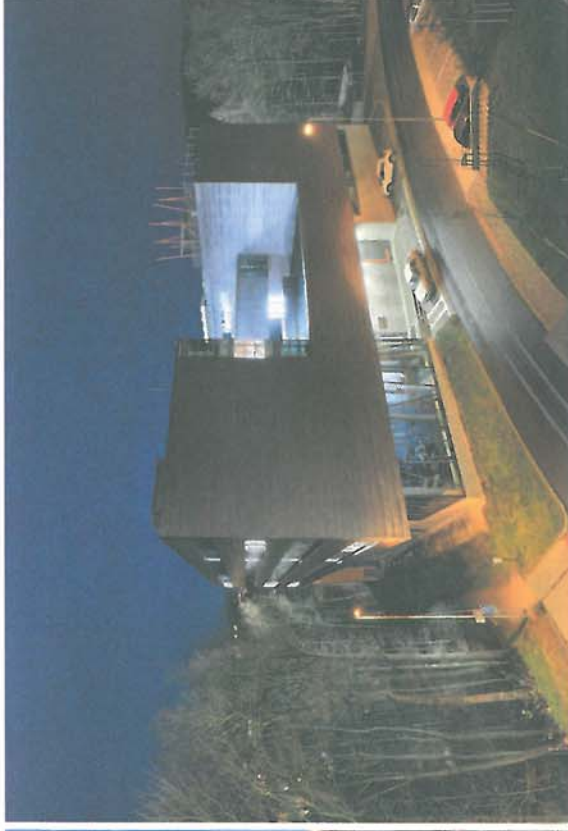
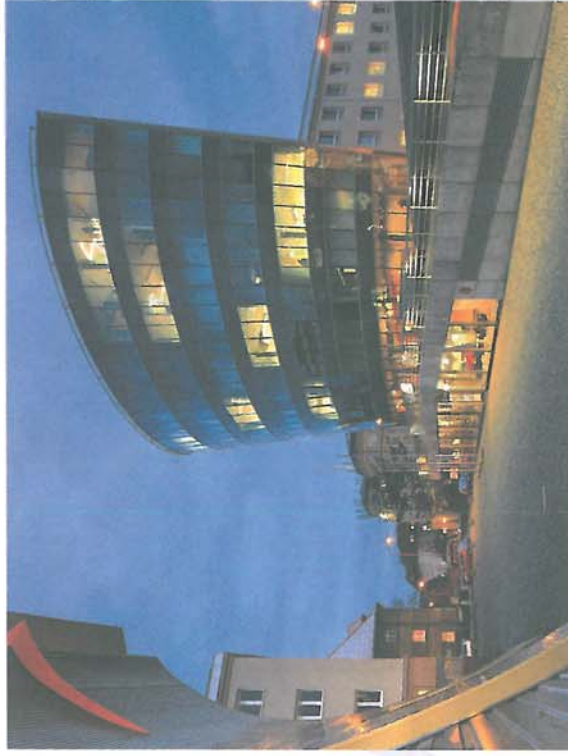
← Světla pod Jestědem  
Stráž p. Ralskem

Callout area with points A through L:

- A
- B
- C
- D
- E
- F
- G
- H
- I
- J
- K
- L



# University City Liberec



## Technical University of Liberec

Your best destination for studies and research

- About 7000 Czech and international students
- Bachelor, Master and PhD programmes
- Courses taught in Czech and English
- 7 faculties
- Institute for Nanomaterials, Advanced Technologies and Innovations
- More information at [www.tul.cz](http://www.tul.cz)

## UNIVERSITY CAMPUS HUSOVA

- A \_\_\_\_\_ Faculty of Mechatronics, Informatics and Interdisciplinary Studies
- B \_\_\_\_\_ Faculty of Textile Engineering
- C \_\_\_\_\_ Faculty of Mechanical Engineering, Faculty of Mechatronics, Faculty of Science, Humanities and Education (Chemistry and physics), Maintenance - administration section, OSH
- D \_\_\_\_\_ Faculty of Textile Engineering
- E \_\_\_\_\_ Students' Club, University Library, Faculty of Mechanical Engineering, Faculty of Textile Engineering
- F \_\_\_\_\_ Faculty of Health Studies, Faculty of Arts and Architecture, Dining Hall
- G \_\_\_\_\_ Faculty of Mechanical Engineering, Faculty of Science, Humanities and Education, Erasmus+ Office

IC \_\_\_\_\_

Rector's Office, International Office, Coffee Shop

L \_\_\_\_\_

Institute for Nanotechnology, Advanced Technologies and Innovation

DH \_\_\_\_\_

Halls of Residence Dolní Hanychov

H \_\_\_\_\_

Faculty of Economics, Dining Hall

HA \_\_\_\_\_

Halls of Residence Harcov, Dining Hall

P \_\_\_\_\_

Faculty of Science, Humanities and Education

T \_\_\_\_\_

Laboratories

## IMPORTANT DESTINATIONS

1 \_\_\_\_\_ Department of Asylum and Migration Policy

2 \_\_\_\_\_ Institute for Language and Preparatory Studies, Charles University

3 \_\_\_\_\_ Public transport Terminal - Fügnerova

4 \_\_\_\_\_ Hospital

5 \_\_\_\_\_ Railway Station

6 \_\_\_\_\_ Coach Station

## OTHER UNIVERSITY BUILDINGS

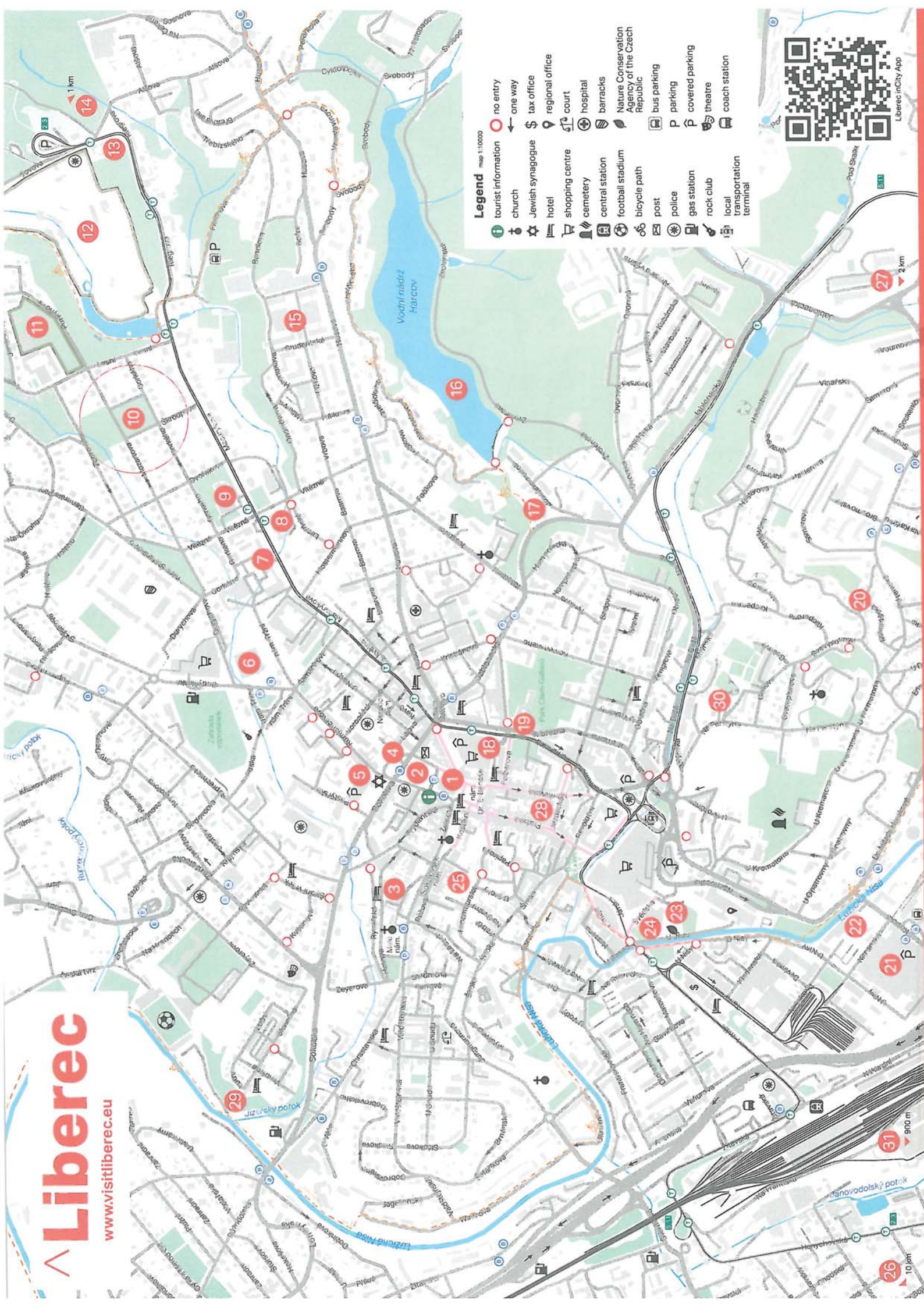


Legend map 1:10000

- tourist information
- church
- Jewish synagogue
- hotel
- shopping centre
- cemetery
- central station
- football stadium
- bicycle path
- post
- police
- gas station
- rock club
- local transportation terminal
- no entry
- one way
- tax office
- regional office
- court
- hospital
- barracks
- Nature Conservation Agency of the Czech Republic
- bus parking
- parking
- covered parking
- theatre
- coach station



Liberec inCity App







**1 TOWN HALL**  
Neo-Renaissance building • year 1888–1893 • a project of Viennese architect F. Neumann • residence of the Municipal Office • decorated facades and rare stained glass windows • main tower is 61 m high • guided tours of the interior, ceremonial room, the tower is also open to the public



**2 F. X. SALDA THEATRE**  
Year 1881–1883 • Neo-Renaissance exterior • Neo-Baroque interior • a project of Viennese architects Fellner and Helmer • rare curtain ensembles, opera-drama-ballet



**3 WALLESTEIN HOUSES**  
Unique architecture • three half-timbered houses from 1678–1681 • the oldest preserved structures in the town



**4 "THE FEAST OF THE GIANTS" STOP**  
Unique bronze stop of the local transportation • year 2005 • author David Černý • artifacts symbolising former Czech-German-Jewish community



**5 THE REGIONAL RESEARCH LIBRARY • JEWISH SYNAGOGUE**  
Building of Reconciliation • one million items • public library • study library and periodicals • library for children and youth • music study • graphic studio • bindery • foreign-language publications • internet • lecture hall • current exhibitions and lectures • Jewish Synagogue integrated in the building



**6 SWIMMING POOL**  
50-metre swimming pool with 8 lanes • educational 25-metre swimming pool • 12.5-metre children pool • steam chambers • whirlpools • sauna • paddling pool • toboggan slides 107-metre and 150-metre • open air wild river and water cave • Kněpp's water treatment • four-lane slide • children "Sauna World" • diving tower • sun meadow



**7 LIBREC TECHNICAL MUSEUM**  
Historic automobiles, motorcycles and technical items relevant for the Liberec region



**8 DISTRICT GALLERY LIBREC – BATHS**  
Neo-Renaissance building (former baths) from 1901–1902 • Viennese architect P. Brang • permanent and temporary exhibitions • Grand Prix Architect Award 2014



**9 NORTH BOHEMIAN MUSEUM IN LIBREC**  
Since 1873 • a typical Neo-Renaissance building with a copy of the original Liberec Town Hall tower • exhibitions of natural history and applied arts



**10 THE VILLA QUARTER**  
In the historicist style • monumental buildings • a promenade at the foot of the Jizera Mountains



**11 BOTANICAL GARDENS LIBREC**  
The oldest botanical gardens in Czech Republic • founded in 1876 • 9 greenhouses (1 with water lilies)



**12 ZOOLOGICAL GARDEN**  
The oldest ZOO in the Czech Republic • founded in 1919 • approximately 172 animal species • About 2 km long sightseeing circle • breeding endangered species • the largest collection of birds of prey in Europe • white tigers • Chinese tahn



**13 CULTURAL AND SOCIAL CENTRE (LIDOVÉ SÁDĚ)**  
Building with features of Romanticism and Art Nouveau from 1900–1901 • remarkable cultural centre • Experimental studio • social events • concerts • 35-metre lookout tower • open-air cinema • outdoor children playground



**14 LIBRECKÁ VÝSŇA**  
Well-known restaurant with a lookout tower 25 m • year 1900–1901 • architect Schmitz • large hall • hunter's restaurant • Liebieg lounge • accommodation



**15 TECHNICAL UNIVERSITY OF LIBREC**  
About 7000 Czech and international students • Bachelor, Master and PhD programmes • courses taught in Czech and English • 7 faculties • [www.tul.cz](http://www.tul.cz)



**16 WATER RESERVOIR HARCŮV**  
Decorated dam with small towers • 1902–1904 • beautiful valley • swimming • beach volleyball • fishing • walks



**17 LIEBIG VILLA**  
Spectacular residence of the Liebieg family • from 1897–1911 • several phases of construction • building features from Historicism to Art Nouveau • open to the public on special occasions



**18 DINOPARK PLAZA LIBREC**  
Indoor facility • robotic and acoustic models • 4D cinema • trail of courage for children – DinoTrack • paleontological playground



**19 CHATEAU**  
1582–1587 • one of the first stone buildings of the city – built by the Redern family • currently not open for the public



**20 LIEBIG'S TOWN**  
(nam. Pod Branou) A romantic villa estate designed by Jacob Schmeisser • 1911–1912



**21 CENTRUM BABYLON**  
aquapark • fun-fair • labyrinth • bowling • golf simulator • laser game • IQPark • hotel • congress centre



**22 IQLANDIA SCIENCE CENTRE**  
Since 2014 • learning about physical, chemical and other natural phenomena by means of games and trials • 10 thematic expositions • 3D planetarium • over 400 exhibits • interactive aids • simulators of natural disasters • thermocamera • plasma globe



**23 SOLC'S HOUSE**  
Folk architecture • an example of a timbered house • built in 1771 • present residence of the Administration of the Protected Landscape Area of the Jizera Mountains



**24 CULTURAL HOUSE**  
The building completed in 1985 • concerts • social events • balls • exhibitions • trade fairs • seminars



**25 LIBREC UNDERGROUND**  
The biggest shelter in Liberec under Sokolovské square • the original tunnels created during the search for iron ore • open to the public by appointment • information: [www.isliberec.eu](http://www.isliberec.eu), +420 485 101 709



**26 JEŠTĚD**  
Elected as the best building of the 20th century • dominant of the city (1012 m) • completed in 1973 • national and cultural memorial • awarded with the prestigious Perret-Prize – architect Karel Hubáček • hotel • cablecar • ski resort



**27 FERDINAND PORSCHE BIRTHPLACE**  
The house where Ferdinand Porsche, the famous automobile designer and "father" of Volkswagen, was born in 1875.



**28 NAIVE THEATRE LIBREC**  
Established in 1949 • one of the first professional puppet theatres in the former Czechoslovakia



**29 EKOPARK LIBREC**  
A unique place covering an area of nearly 5000 m<sup>2</sup> transformed into a green oasis • the green heart of the city of Liberec



**30 HANIBAL – CLIMBING WALL**  
Climbing wall in the former quarry • right in the city centre • glacier climbing training • 10 climbing routes • belaying and rescue training



**31 HOME CREDIT ARENA / SPORT PARK LIBREC**  
Is an indoor sporting arena located in Liberec • the capacity of the arena is 9,000 people • built in 2005